

# Summer Fun @ GSA



Registration available at [www.gsanutley.org](http://www.gsanutley.org)

June 18 - July 29, 2018

Program conducted by certified teachers and assisted by college and high school counselors for students entering K - 8 grade.

(Separate Pre-K 3/4 Program Available)

## PROGRAM

**Daily** - Religion, Math, Reading, Arts & Crafts and Physical Education.

**Weekly**- Culinary, Science, Computer Activities.

### EXTENDED CARE PROVIDED

(Prices based on one child)

**Morning Care 7:00 - 9:00**

\$4.50 per morning (1) child

\$6.50 per morning (2) children

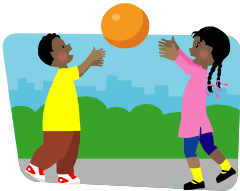
\$8.50 per morning (3+) children

**Afternoon Care 3:00 - 6:00pm**

up until 4pm \$37 per week per child

up until 5pm \$55 per week per child

up until 6pm \$72 per week per child



**Registration Fee \$80.00 per child.**

Morning (9:00 - 11:30) OR

Afternoon Session (12:30 - 3:00)

\$105.00 per week

Morning and Afternoon Sessions

(9:00 - 3:00) \$180.00 per week

Brown Bag Lunch or Cafeteria Purchase

Academics in Morning Session **ONLY**

15% Discount for 2 or more children.